

Concerts & Events

2009-2010

OCTOBER

Wednesday, October 7, 2009
7:30pm
OPENING NIGHT: Alumni & Friends Celebration
Free, *Wilmington Branch*
RSVP to Steve Wasserleben

Sunday, October 11, 2009
1:00pm—Workshops
3:00pm—Concert
CULTURAL CROSSROADS: An Afternoon of Celtic Music & Art, featuring Ken Kolodner
\$10/\$5, *Wilmington Branch*

Wednesday, October 21, 2009
7:30pm
MUSIC MASTERS: A Journey Through the Classical Period
\$10/\$5, *Milford Branch*

Saturday, October 24, 2009
STUDENT RECITALS: *Wilmington Branch*

Sunday, October 25, 2009
3:00pm
CHESAPEAKE SILVER CORNET BRASS BAND: British-Style Brass
\$10/\$5, *Wilmington Branch*

NOVEMBER

Sunday, November 1, 2009
SUZUKI ACADEMY: Solo Recitals
Wilmington Branch

Wednesday, November 4, 2009
7:30pm
MUSIC MASTERS: Rachmaninoff & Prokofiev
\$10/\$5, *Wilmington Branch*

Saturday, November 7, 2009
3:00pm
FAMILY CONCERT: Webster the Musical Spider
\$5, *Milford Branch*

Sunday, November 8, 2009
2:00pm
CALVARY COMMUNITY SERIES: Honor Student Recital
Free, *Calvary Episcopal Church*
304 Lore Avenue, *Wilmington*

Sunday, November 8, 2009
2:00pm
EARLY CHILDHOOD: Family Music Celebration
Free, *Wilmington Branch*

Sunday, November 8, 2009
3:00pm
FAMILY CONCERT: Webster the Musical Spider
\$5, *Wilmington Branch*

Saturday, November 14, 2009
STUDENT RECITALS: *Wilmington & Milford Branches*

Sunday, November 15, 2009
3:00pm
WILMINGTON COMMUNITY ORCHESTRA: Surprise!
\$10/\$5, *Wilmington Branch*

Sunday, November 22, 2009
3:00pm
SUZUKI ACADEMY: Harvest Festival
Free, *Location TBA*

DECEMBER

Friday, December 4, 2009
5:00-8:00pm
HOLIDAY STROLL OPEN HOUSE
Milford Branch

Saturday, December 5, 2009
STUDENT RECITALS: *Wilmington Branch*

Sunday, December 6, 2009
3:00pm
FAMILY CONCERT: Holiday Sing
Free, *Wilmington Branch*

Sunday, December 6, 2009
4:00pm
CULTURAL CROSSROADS: The Lights of Chanukah
\$10/\$5, *Adas Kodesch Shel Emeth*
4412 Washington St., *Wilmington*

Sunday, December 13, 2009
4:00pm
WINTER CHORAL CONCERT
Free, *St. Helena Parish*
602 Philadelphia Pike, *Wilmington*

Wednesday, December 16, 2009
7:30pm
CHESAPEAKE SILVER CORNET BRASS BAND: Holiday Brass
\$10/\$5, *Wilmington Branch*

JANUARY

Saturday, January 9, 2010
3:00pm
FAMILY CONCERT: Einstein's Mozart: Two Geniuses
\$5, *Milford Branch*

Sunday, January 10, 2010
2:00pm
CALVARY COMMUNITY SERIES: Born in the 20th Century
Free, *Calvary Episcopal Church*
304 Lore Avenue, *Wilmington*

Sunday, January 10, 2010
3:00pm
FAMILY CONCERT: Einstein's Mozart: Two Geniuses
\$5, *Wilmington Branch*

Friday, January 15, 2010
7:30pm
CULTURAL CROSSROADS: Dr. Martin Luther King, Jr. & Black History Month Tribute
\$5, *Wilmington Branch*

Sunday, January 17, 2010
SUZUKI ACADEMY: Solo Recitals
Wilmington Branch

Tuesday, January 19, 2010
7:00pm
ORCHESTRAL CONCERT: Delaware Youth Orchestra & Suzuki Orchestras
Free, *Wilmington Branch*

Saturday, January 23, 2010
10:30am
EARLY CHILDHOOD: Family Music Celebration
Free, *Wilmington Branch*

Monday, January 25, 2010
7:30pm
ORCHESTRAL CONCERT: Delaware Youth Symphony
Free, *Wilmington Branch*

Wednesday, January 27, 2010
7:30pm
MUSIC MASTERS: Bach, Brahms and...?
\$10/\$5, *Wilmington Branch*

Saturday, January 30, 2010
STUDENT RECITALS: *Milford Branch*

FEBRUARY

Saturday, February 6, 2010
STUDENT RECITALS: *Wilmington Branch*

Sunday, February 7, 2010
3:00pm
WILMINGTON COMMUNITY ORCHESTRA: 3 Big Bs
\$10/\$5, *Wilmington Branch*

Saturday, February 13, 2010
2:00pm
PIANO MASTER CLASS: Hiroko Yamazaki
Free, *Milford Branch*

Sunday, February 21, 2010
2:00pm—Workshop
3:00pm—Concert
CULTURAL CROSSROADS: Music & Dance of the Middle East
\$10/\$5, *Wilmington Branch*

Wednesday, February 24, 2010
7:30pm
MUSIC MASTERS: A French Fête
\$10/\$5, *Wilmington Branch*

MARCH

Saturday, March 6, 2010
STUDENT RECITALS: *Wilmington Branch*

Wednesday, March 10, 2010
7:30pm
MUSIC MASTERS: Milford Branch Faculty in Recital
\$10/\$5, *Milford Branch*

Sunday, March 14, 2010
2:00pm
CALVARY COMMUNITY SERIES: Happy Birthday, Chopin!
Free, *Calvary Episcopal Church*
304 Lore Avenue, *Wilmington*

Sunday, March 14, 2010
3:00pm—Concert
4:00pm—Instrument Petting Zoo
WILMINGTON COMMUNITY ORCHESTRA: Let's Dance! A Family Concert
\$5, *Wilmington Branch*

Sunday, March 14, 2010
4:00pm
EARLY CHILDHOOD: Family Music Celebration
Free, *Wilmington Branch*

Wednesday, March 24, 2010
7:30pm
MUSIC MASTERS: A Schumann Celebration, 200 Years!
\$10/\$5, *Wilmington Branch*

Saturday, March 27, 2010
STUDENT RECITALS: *Milford Branch*

APRIL

Wednesday, April 21, 2010
7:30pm
CHORAL CONCERT: Select Choral Ensemble, Delaware Women's Chorus & Delaware Men's Chorus
Free, *Wilmington Branch*

Saturday, April 24, 2010
10:00am-4:00pm
BUG & BUD OPEN HOUSE
Milford Branch

Saturday, April 24, 2010
STUDENT RECITALS: *Wilmington Branch*

Wednesday, April 28, 2010
7:00pm
CHORAL CONCERT: Wilmington Youth Chorale & Delaware Children's Chorus
Free, *Wilmington Branch*

MAY

Friday, May 14, 2010
7:30pm
WILMINGTON COMMUNITY ORCHESTRA: All Roads Lead to Rome
\$10/\$5, *Wilmington Branch*

Saturday, May 15, 2010
STUDENT RECITALS: *Wilmington Branch*

Sunday, May 16, 2010
4:00pm
SPRING CHORAL CONCERT
Free, *St. Helena Parish*
602 Philadelphia Pike, *Wilmington*

Monday, May 17, 2010
7:30pm
SPRING ORCHESTRAL CONCERT
Free, *Wilmington Branch*

Saturday, May 22, 2010
10:00am
VIOLIN MASTER CLASS: Christina von Duyke
Free, *Milford Branch*

Wednesday, May 26, 2010
6:00pm
HONOR AWARDS: Recital & Ceremony
Free, *Wilmington Branch*

JUNE

Thursday, June 3, 2010
time TBA
SHOWCASE
\$10/\$5, *The Grand Opera House*
818 North Market Street, *Wilmington*

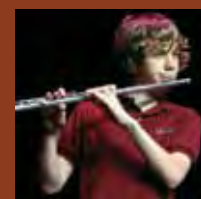
Saturday, June 5, 2010
1:15pm
ORCHESTRAL CONCERT: Suzuki Orchestras & Cello Choir
Free, *Wilmington Branch*

Saturday, June 12, 2010
STUDENT RECITALS: *Wilmington Branch*

Saturday, June 19, 2010
STUDENT RECITALS: *Milford Branch*

SUZUKI ACADEMY SOLO RECITALS

Sunday, November 1, 2009
Sunday, January 17, 2010
Sunday, June 20, 2010
Wilmington Branch



STUDENT RECITALS

Student performances are an integral part of Music School life. Specific recital times will be announced approximately two weeks prior to the recital date.
Tickets: Free and open to public observation!

WILMINGTON RECITALS

Saturday, October 24, 2009
Saturday, November 14, 2009
Saturday, December 5, 2009
Saturday, February 6, 2010
Saturday, March 6, 2010
Saturday, April 24, 2010
Saturday, May 15, 2010
Saturday, June 12, 2010

MILFORD RECITALS

Saturday, November 14, 2009
Saturday, January 30, 2010
Saturday, March 27, 2010
Saturday, June 19, 2010

SUZUKI ACADEMY SOLO RECITALS

Sunday, November 1, 2009
Sunday, January 17, 2010
Sunday, June 20, 2010
Wilmington Branch

OTHER SUZUKI EVENTS

See Ensembles section for Suzuki Orchestra events.

Sunday, November 22, 2009—3:00pm
Harvest Festival
Location TBA

TBA
Suzuki Academy Day
Wilmington Branch

HONOR AWARDS

Wednesday, May 26, 2010—6:00pm
Recital & Ceremony
Wilmington Branch



OPENING NIGHT!

Wednesday, October 7, 2009—7:30pm

ALUMNI & FRIENDS CELEBRATION University of Delaware/Music School Affinity Night

Featuring: A brief performance by alumni and associates; Distinguished Alumni Awards* presentation; reception
Location: *Wilmington Branch*
Tickets: Free and open to the public! RSVP to Steve Wasserleben, *director of development*, 302-762-1132, ext. 11, or swasserleben@musicsschoolofdelaware.org

*Visit the Music School website for more info about the Distinguished Alumni Awards.

SHOWCASE

Thursday, June 3, 2010—time TBA

Featuring: A Music School spectacular with choral, orchestral and chamber music ensembles
Location: *The Grand Opera House*, 818 North Market Street, *Wilmington*
Tickets: \$10 for adults and seniors, \$5 for students. Limited seating; advance tickets only.

Complete concert & event info available online at
www.musicsschoolofdelaware.org

Join our **e-newsletter** to receive important updates!

Sign up online or contact media relations consultant Tara Hurlebaus at thurlebaus@musicsschoolofdelaware.org

Call **302-762-1132** for tickets

www.musicsschoolofdelaware.org

Wilmington Branch
4101 Washington Street
Wilmington, DE 19802
302-762-1132

Milford Branch
P.O. Box 442
10 South Walnut Street
Milford, DE 19963
302-422-2043



Programs are made possible, in part, by a grant from the Delaware Division of the Arts, a state agency dedicated to nurturing and supporting the arts in Delaware, in partnership with the National Endowment for the Arts.

Non-Profit Org.
U.S. Postage
PAID
Permit No. 11
Wilm. DE 198



Formerly The Wilmington Music School
Wilmington Branch
4101 Washington Street, Wilmington, DE 19802



Kate M. Ransom, *President & CEO*

Concerts & Events 2009-2010



SEASON SPONSOR





CULTURAL CROSSROADS

Cultural Crossroads programs integrate music, dance and visual arts to celebrate the rich musical diversity of our world and our own community. Many programs feature hands-on workshops or visual art exhibitions in addition to performances.

Location: Wilmington Branch, unless otherwise noted

Tickets: \$10 for adults, \$5 for seniors and students, unless otherwise noted, including any workshops

Sunday, October 11, 2009
1:00pm—Workshops
3:00pm—Concert

AN AFTERNOON OF CELTIC MUSIC & ART, FEATURING KEN KOLODNER

Workshops: Fiddle workshop with Ken Kolodner; bodhrán and pennywhistle workshop with Michele McCann; visual art exhibit featuring photography and other media. Bodhrán beaters and pennywhistles provided for a modest fee. Limited space; register by Sept. 27 for materials purchase, otherwise by Oct. 4.

Concert featuring: Ken Kolodner, *hammered dulcimer & fiddle*;

Slyte of Hand, *pan-Celtic music*; members of the Brandywine Harp Orchestra, directed by Janet Witman; Brandywine Fiddlers, directed by Shelley Beard Schleigh

Sunday, December 6, 2009—4:00pm

THE LIGHTS OF CHANUKAH

Featuring: A multi-generational musical collaboration between the Music School and the Wilmington Jewish community, including solo performances by the cantors of three local synagogues as well as choirs, a dance troupe, a klezmer band and Music School faculty and students

Location: Adas Kodesch Shel Emeth, 4412 Washington St., Wilmington

Sunday, February 21, 2010
2:00pm—Workshop
3:00pm—Concert

MUSIC & DANCE OF THE MIDDLE EAST

Workshop: Belly dance workshop with Almaaza. Limited space; register by February 17.

Concert featuring: Musical traditions from Turkey, Iran, Afghanistan, Israel and more, with Almaaza, *belly dancer*; the Delaware Children's Chorus, conducted by Marybeth Miller; Music School and community instrumentalists and percussionists. Raffle to win an authentic Turkish saz.

Friday, January 15, 2010—7:30pm

DR. MARTIN LUTHER KING, JR., & BLACK HISTORY MONTH TRIBUTE

Proceeds benefit the Jacqueline Beach Faulcon Scholarship Fund

Featuring: Matthew Shipp, *guest jazz piano*; Jacqueline Beach Faulcon, *soprano*, and Clarence A. Faulcon, *piano*; DJ Amaze; Washington Street Groove, directed by Christopher Braddock; Select Choral Ensemble, conducted by Dr. Michael Larkin

Tickets: \$5 for everyone; limited seating

Sunday, February 21, 2010
2:00pm—Workshop
3:00pm—Concert

MUSIC & DANCE OF THE MIDDLE EAST

Workshop: Belly dance workshop with Almaaza. Limited space; register by February 17.

Concert featuring: Musical traditions from Turkey, Iran, Afghanistan, Israel and more, with Almaaza, *belly dancer*; the Delaware Children's Chorus, conducted by Marybeth Miller; Music School and community instrumentalists and percussionists. Raffle to win an authentic Turkish saz.

Wednesday, November 4, 2009—7:30pm

RACHMANINOFF & PROKOFIEV

Works: Rachmaninoff's Cello Sonata in g minor, Op. 19, and Suite No. 2 for two pianos, Op. 17; Prokofiev's Violin Sonata in D Major

Featuring: Liliya Maslov, *piano*; Oleg Maslov, *piano*; Holly Roadfeldt-O'Riordan, *piano*; Timothy Schwarz, *violin*; Lawrence Stomberg, *guest cello*

Wednesday, October 21, 2009—7:30pm

A JOURNEY THROUGH THE CLASSICAL PERIOD

Works: Haydn's Divertimento in D Major; Beethoven's String Trio in c minor; Mendelssohn's Piano Quartet; Carulli's Duo in G Major for two guitars

Featuring: Christopher Braddock, *guitar*; Eric Coyne, *cello*; Kristin Dittlow, *guest piano*; Matthew Lavanish, *guitar*; Julianne Murphy, *violin*; Shelley Beard Schleigh, *viola*

Wednesday, March 10, 2010—7:30pm

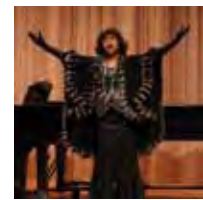
MILFORD BRANCH FACULTY IN RECITAL

Concert details will be announced later. Check the Music School's website for up-to-date information.

Wednesday, March 24, 2010—7:30pm

A SCHUMANN CELEBRATION, 200 YEARS!

Works: Schumann's Piano Trio in d minor, Op. 63, No. 1, and Piano Quintet in E-flat Major, Op. 44



MUSIC MASTERS

Music Masters concerts showcase Music School faculty members and special guests in a series of themed performances.

Location: Wilmington & Milford Branches

Tickets: \$10 for adults, \$5 for seniors and students*

WILMINGTON

Wednesday, November 4, 2009—7:30pm

RACHMANINOFF & PROKOFIEV

Works: Rachmaninoff's Cello Sonata in g minor, Op. 19, and Suite No. 2 for two pianos, Op. 17; Prokofiev's Violin Sonata in D Major

Featuring: Liliya Maslov, *piano*; Oleg Maslov, *piano*; Holly Roadfeldt-O'Riordan, *piano*; Timothy Schwarz, *violin*; Lawrence Stomberg, *guest cello*

Wednesday, January 27, 2010—7:30pm

BACH, BRAHMS AND...? A JOURNEY THROUGH THE CLASSICAL PERIOD

Works: Bach's Violin Sonata No. 3 in E Major, BWV 1016; Barber's String Quartet; Brahms' Sextet in B-flat Major, Op. 18

Featuring: Serafin String Quartet; Luigi Mazzocchi, *violin*; Tracy Richardson, *harpsichord*; Marka Kasker Simmons, *guest viola*; Jennifer Crowell Stomberg, *cello*

Wednesday, February 24, 2010—7:30pm

A FRENCH FÊTE

Works: Françaix's Tema con Variazioni for clarinet and piano; Sancan's Sonatine for flute and piano; Desenclos' Prelude, Cadence and Finale for saxophone and piano; Milhaud's "Scaramouche" for piano four-hands

Featuring: Pyxis Piano Quartet; Lotus Cheng, *piano*; Lynne Cooksey, *flute*; Donna DeLaurentis, *piano*; Jared Kobos, *clarinet*; Kirk O'Riordan, *saxophone*; Holly Roadfeldt-O'Riordan, *piano*

*Up to two complimentary tickets per Music Masters concert are available for Music School faculty, students and their families. Tickets must be reserved at least one day prior to the performance. Please contact the Wilmington or Milford Branch front desks for more information.

Complete concert & event info available online at WWW.MUSICSCHOOLOFDELAWARE.ORG

Images: Timothy Hawk, Conrad Erb Photography, Royal Photography, DVC Productions



WILMINGTON COMMUNITY ORCHESTRA

The WCO, under the direction of conductor Dr. Timothy Schwarz, presents four concerts in the 2009-2010 season and will be joined by several guest soloists.

Location: Wilmington Branch

Tickets: \$10 for adults, \$5 for seniors and students, unless otherwise noted

Sunday, November 15, 2009—3:00pm

SURPRISE! WORKS: Saint-Saëns' "Danse Bacchante"; Brahms' Piano Concerto No. 2, Op. 83; Haydn's "Surprise" Symphony No. 94

Featuring: Sandra Rivers, *guest piano*

Sunday, February 7, 2010—3:00pm

3 BIG BS

Works: Bach's Orchestral Suite No. 3 in D Major; Beethoven's Symphony No. 1; Brahms' Concerto for violin, cello and orchestra, Op. 102

Featuring: Dr. Richard Prior, *guest conductor*; Timothy Schwarz, *violin*; Lawrence Stomberg, *guest cello*



PERFORMING ARTS PARTNERS

The Music School enjoys partnerships with several local ensembles who bring their musical excellence to our concert hall.

Location: Wilmington Branch

Tickets: \$10 for adults, \$5 for seniors and students

CHESAPEAKE SILVER CORNET BRASS BAND

Ed Hockersmith, *conductor*

Sunday, October 25, 2009—3:00pm

BRITISH-STYLE BRASS

Classics to swing, a concert for all musical tastes by a 35-piece, British-style brass concert band

Wednesday, December 16, 2009—7:30pm

HOLIDAY BRASS

Favorite holiday carols and ballads, including "Silent Night," "O Holy Night," "White Christmas," "Go Tell It on the Mountain" and more



FAMILY CONCERTS

These fun and unique family-focused concerts are designed to engage even the youngest children in musical adventures that will entertain the entire family!

Location: Wilmington & Milford Branches

Tickets: \$5 for everyone, unless otherwise noted

WILMINGTON

Sunday, November 8, 2009—3:00pm

WEBSTER THE MUSICAL SPIDER*

Featuring: Serafin String Quartet; Lynne Cooksey, *flute*; Michael Larkin, *narrator*; Valerie Von Pechy Whitcup, *guest harpist*. In this original composition by Valerie Von Pechy Whitcup, Webster, a spider, is ridiculed because he prefers to spend his time playing music on his web rather than hunting for bugs to eat. In a surprising turn of events, Webster becomes a hero, and everyone learns the power of music and the lesson of acceptance.

Ages: 4 years and up

FAMILY MUSIC CELEBRATION: Free 30-minute Early Childhood sample classes at 2:00pm for children ages 1½ to 7.

Sunday, December 6, 2009—3:00pm

HOLIDAY SING*

Featuring: Sing-along concert with Early Childhood faculty and a performance by the Wilmington Youth Chorale, conducted by Marybeth Miller

Ages: Children of all ages welcome

Tickets: Free! Non-perishable food donations will be collected for a local charity.

Sunday, January 10, 2010—3:00pm

EINSTEIN'S MOZART: TWO GENIUSES*

Featuring: Serafin String Quartet and poet Kate Light. The performance integrates two of Mozart's great string works with Kate Light's original poetry and prose. The narration draws listeners into ordinary and extraordinary moments of these two exceptional men, while the music casts its own magic.

Ages: 11 years and up

Sunday, March 14, 2010—3:00pm

LET'S DANCE! A FAMILY CONCERT

Works: Saint-Saëns' "Dance Macabre"; Vivaldi's "Goldfinch" Flute Concerto; Tchaikovsky's "Dance of the Sugar Plum Fairies"; Ravel's "Bolero"

Featuring: Melinda Bowman, *flute* Instrument Petting Zoo: Meet the instruments of the orchestra following the concert

Ages: 7 years and up

Saturday, January 9, 2010—3:00pm

EINSTEIN'S MOZART: TWO GENIUSES

See Wilmington section for details.

Saturday, November 7, 2009—3:00pm

WEBSTER THE MUSICAL SPIDER

See Wilmington section for details. Sample classes not included at Milford.

Saturday, January 9, 2010—3:00pm

EINSTEIN'S MOZART: TWO GENIUSES

See Wilmington section for details.



ENSEMBLES

The Music School is home to Delaware's premier ensembles for children, teens and adults, including several orchestras, choirs and a variety of small ensembles. See the Wilmington Community Orchestra section for information about WCO concerts.

Location: Wilmington Branch, unless otherwise noted

Tickets: Free!

CHORAL

Sunday, December 13, 2009—4:00pm

WINTER CHORAL CONCERT

Featuring: Wilmington Youth Chorale, Delaware Children's Chorus, Select Choral Ensemble, Delaware Women's Chorus, Delaware Men's Chorus

Conductors: Marybeth Miller, Dr. Michael Larkin, Joanne Ward

Wednesday, April 21, 2010—7:30pm

SELECT CHORAL ENSEMBLE, DELAWARE WOMEN'S CHORUS & DELAWARE MEN'S CHORUS

Conductors: Dr. Michael Larkin, Joanne Ward

Wednesday, April 28, 2010—7:00pm

WILMINGTON YOUTH CHORALE & DELAWARE CHILDREN'S CHORUS

Conductor: Marybeth Miller

Sunday, May 16, 2010—4:00pm

SPRING CHORAL CONCERT

Featuring: Wilmington Youth Chorale, Delaware Children's Chorus, Select Choral Ensemble, Delaware Women's Chorus, Delaware Men's Chorus

Conductors: Marybeth Miller, Dr. Michael Larkin, Joanne Ward

Location: St. Helena Parish 602 Philadelphia Pike, Wilmington

Tuesday, January 19, 2010—7:00pm

DELAWARE YOUTH ORCHESTRA & SUZUKI ORCHESTRAS

Conductors: Christina von Duyke, Julianne Murphy

Monday, January 25, 2010—7:30pm

DELAWARE YOUTH SYMPHONY

Conductor: Dr. Michael Larkin

Monday, May 17, 2010—7:30pm

SPRING ORCHESTRAL CONCERT

Featuring: Orchestral Prep, Delaware Youth Orchestra, Delaware Youth Symphony

Conductors: Gwen Fuller, Christina von Duyke, Dr. Michael Larkin

Saturday, June 5, 2010—1:15pm

SUZUKI ORCHESTRAS & CELLO CHOIR

Conductors: Julianne Murphy, Jennifer Crowell Stomberg

ORCHESTRAL

Sunday, November 8, 2009—2:00pm

HONOR STUDENT RECITAL

Featuring: Music School Honor Award recipients

Sunday, January 10, 2010—2:00pm

BORN IN THE 20TH CENTURY

Works: Miles Davis' "A Kind of Blue Medley"; Keiko Abe for solo marimba; Nikita Koshkin's "Usher Waltz"; Andrea Clearfield's "From the Heart"; faculty Christopher Braddock's "All the Days He Has Seen"; faculty Chuck Holdeman's "avant, adage, après"; faculty Kirk O'Riordan's "Pressing Forward, Pushing Back"

Featuring: Melinda Bowman, *flute*; Christopher Braddock, *guitar*; Zachary Crystal, *percussion*; Richard Gangwisch, *piano*; Chuck Holdeman, *bassoon*; Matthew Lavanish, *guitar*; Janka Pernisz, *violin*; Jennifer Crowell Stomberg, *cello*; Hiroko Yamazaki, *piano*

Sunday, March 14, 2010—2:00pm

HAPPY BIRTHDAY, CHOPIN!

Works: Chopin's Barcarolle in F-sharp Major; Nocturne in c minor, Op. 48, No. 1; Polonaise Fantasy; Etudes from Op. 10 and Op. 25; Fantasia in f minor, Op. 49

Featuring: David Brown, *piano*; Oleg Maslov, *piano*; Holly Roadfeldt-O'Riordan, *piano*



CALVARY COMMUNITY SERIES

In partnership with Calvary Episcopal Church, these Sunday concerts feature Music School faculty and students in themed performances.

Location: Calvary Episcopal Church, 304 Lore Avenue, Wilmington

Tickets: Free! Donations appreciated

Sunday, March 14, 2010—2:00pm

HAPPY BIRTHDAY, CHOPIN!

Works: Chopin's Barcarolle in F-sharp Major; Nocturne in c minor, Op. 48, No. 1; Polonaise Fantasy; Etudes from Op. 10 and Op. 25; Fantasia in f minor, Op. 49

Featuring: David Brown, *piano*; Oleg Maslov, *piano*; Holly Roadfeldt-O'Riordan, *piano*

Sunday, November 8, 2009—2:00pm

HONOR STUDENT RECITAL

Featuring: Music School Honor Award recipients

Sunday, January 10, 2010—2:00pm

BORN IN THE 20TH CENTURY

Works: Miles Davis' "A Kind of Blue Medley"; Keiko Abe for solo marimba; Nikita Koshkin's "Usher Waltz"; Andrea Clearfield's "From the Heart"; faculty Christopher Braddock's "All the Days He Has Seen"; faculty Chuck Holdeman's "avant, adage, après"; faculty Kirk O'Riordan's "Pressing Forward, Pushing Back"

Featuring: Melinda Bowman, *flute*; Christopher Braddock, *guitar*; Zachary Crystal, *percussion*; Richard Gangwisch, *piano*; Chuck Holdeman, *bassoon*; Matthew Lavanish, *guitar*; Janka Pernisz, *violin*; Jennifer Crowell Stomberg, *cello*; Hiroko Yamazaki, *piano*

Sunday, March 14, 2010—2:00pm

HAPPY BIRTHDAY, CHOPIN!

Works: Chopin's Barcarolle in F-sharp Major; Nocturne in c minor, Op. 48, No. 1; Polonaise Fantasy; Etudes from Op. 10 and Op. 25; Fantasia in f minor, Op. 49

Featuring: David Brown, *piano*; Oleg Maslov, *piano*; Holly Roadfeldt-O'Riordan, *piano*

Special thanks to our 2009-2010 season sponsor:

