



REGISTER
BY MAY 1
AND SAVE
\$20!

SUMMER FUN!

NEW CASTLE, KENT & SUSSEX COUNTY • serving DE, PA, MD and NJ • ALL ages and levels!



 THE Music
School
OF DELAWARE

MAKE MUSIC PART OF YOUR

SUMMER!



The Music School of Delaware is your place for summer fun! Summer is the perfect time for private study and exploring new instruments, camps or programs. Take advantage of the flexible summer session to expand your child's or your own musical horizons. Whether you live in Delaware, Pennsylvania, Maryland, New Jersey or beyond, we have a program just for you!

NORTHERN DELAWARE NEW CASTLE COUNTY

SOUTHERN DELAWARE KENT & SUSSEX COUNTY

Private Study 3

Early Childhood Music & Movement 3 & 4

Workshops 4

String, Instrumental & Piano Programs 5

Musicianship 6

Composition 6

Adult Programs 6

Private Study 7

Early Childhood Music & Movement 7

Workshops, Classes & Camps 7 & 8

Adult Programs 8

.....

Summer Programs Registration Form 9 & 10

Summer Policies & Information 11

Questions?

Contact us at:
 WILMINGTON BRANCH
 (302) 762-1132
 MILFORD BRANCH
 (302) 422-2043
musicsofdelaware.org

2014 Private Lesson Days

Week	Monday	Tuesday	Wednesday	Thursday	Friday
1	6/23	6/24	6/25	6/26	6/27
2	6/30	7/1	7/2	7/3	7/11*
3	7/7	7/8	7/9	7/10	7/18*
4	7/14	7/15	7/16	7/17	7/25*
5	7/21	7/22	7/23	7/24	8/1*
6	7/28	7/29	7/30	7/31	8/8*
7	8/4	8/5	8/6	8/7	8/15*
8	8/11	8/12	8/13	8/14	8/22*

Save \$20!

Register by May 1 and we'll waive your processing fee.
 Registration deadline is June 9 and space is limited, so please register early. Financial assistance is available; application forms for financial aid must be submitted at the time of registration.

NORTHERN DELAWARE

NEW CASTLE COUNTY • WILMINGTON BRANCH 4101 Washington Street, Wilmington DE 19802 • (302) 762-1132



Early Childhood Music & Movement (ages 18 months to youth)

Creatures in My Backyard

WEDNESDAYS: May 21, 28, June 4, 11
10-10:45am

Welcome to my backyard! Dedicated to the great outdoors, the environment and our many neighborhood animal friends, this class is full of songs, instruments, finger-plays, rhymes, musical stories and dances that will inspire toddlers and parents to explore and discover the wonders of the natural world.

ages 18m-3½ with adult

TUITION: \$55 per 4-week session
MATERIALS: \$28 per student (includes CD, instrument)

Family Zoo Train!

WEDNESDAYS: July 9, 16, 23, 30
10-10:45am

Children love to go to the zoo! Can you stomp like an elephant, roar like a lion or jump like a monkey? Through songs, finger-plays, movement, dance, listening to sounds, instrument exploration and story time, your child will improve musical aptitude for future music instruction and help prepare for school.

ages 18m-4 with adult

TUITION: \$55 per 4-week session
\$29 for second child
MATERIALS: \$30 per family (includes CD, book, parent poster and animal shaker); \$5 extra shaker

Private Study (all ages & levels)

Instrument, Voice & Suzuki Academy Private Lessons

See calendar on page 2 for dates

Instruction in voice, strings, fiddle, woodwinds, brass, percussion, drum set, piano, organ, harpsichord, harp/Celtic harp, guitar, bass guitar, dobro and mandolin. A minimum of two hours of lessons is required. Additional lessons may be scheduled (\$35.50 per half hour). Lesson length varies (30/45/60 minutes). Regular Suzuki Academy group classes resume in Fall 2014.

TUITION: \$142 for two hours of private study

FREE Music Play Date

Wednesday, June 18
10-10:45am

A fun day to experience a variety of music, instrument play, dance and movement activities with your child. Come see what we are all about!

ages 18m-5

If your child has specific food or environmental allergies, or pertinent medical conditions, please list them on the Registration Form (pages 9-10).

Summer Arts Program

A multi-art enrichment program for preschool children.

MONDAY-FRIDAY: 9:30am-12pm

July 7-11

Water theme (string demo)

July 14-18

Nature theme (woodwind demo)

July 21-July 25

Animal theme (brass demo)

July 28-August 1

World Music theme (drums/percussion demo)

NEW!

A fun way to develop creativity, imagination and self-expression through music, dance, visual art, crafts and language. Creative elements connect all the arts cohesively through different skills. Children who develop artistic vision and technique become creators rather than imitators. This ability to transfer concepts among subjects accelerates learning in any environment.

Each day includes one hour of music class and at least one other program: Dance (M & Th), Language (T & W), Art (T), Yoga (F) taught by a professional teaching artist. Each week includes a demo by a professional musician and concludes with family time. All students must be potty trained. Daily snack provided.*

TUITION: 2 day (Tue, Thu) \$60
3 day (Mon, Wed, Fri) \$100
full week (Mon-Fri) \$150

LUNCH BUNCH: 12-1pm (Mon-Thur)
\$10 per day (bring lunch)

ages 3½-5½



Instrument Introduction for Current Students

See calendar on page 2 for dates

Would you like to try a new instrument? Want to add variety to your musical routine? Summer is a great time to explore a new instrument without a long-term commitment. Register by May 1 and receive \$10 off private lessons for any new instrument. Regular registration policies and summer private study schedules apply.

TUITION: \$10 discount on private study rates (first two hours only)

MATERIALS: Contact the Registrar about instrument rentals



Workshops

(youth to adult)

Early Childhood Music & Movement

(ages 18 months to youth, cont.)

Full Day Camp

June 23-27

ages 6-8

Stay the Day at The Music School of Delaware and join us for five full days of musical fun! Ages 6 to 8 can join us from 9:30am-4pm and enjoy **Instrumental Sampler** and **Tell Me a Tale** together at the discounted rate of \$335 tuition and \$60 materials per student. Bring a bagged lunch. Each offering is also available as a stand-alone program.

Full Day Camp

August 4-8

ages 6-7

Stay the Day at The Music School of Delaware and join us for five full days of musical fun! Ages 6 to 7 can join us from 9am-3pm and enjoy **Jungle Beat** and **Intro to Keyboard** together for the discounted price of \$275 tuition and \$56 materials per student. Bring a bagged lunch. Each offering is also available as a stand-alone program.

Instrumental Sampler

MON-FRI: June 23-27
9:30am-12:30pm

Introduce your child to music study in this fun five-day exploration of various instruments.

ages 6-9

Students, grouped by age, will have daily classes involving singing, theory games and introductory group lessons in flute, piano, voice and violin.

TUITION: \$195 per week
MATERIALS: \$27 instrument rental

Tell Me a Tale

MON-FRI: June 23-27, 1-4pm

Experiencing music through storytelling, your child will develop an early awareness of rhythm, movement, singing and drama. Each lesson features a new tale from around the world, explored through multi-instrument and multicultural elements. All told, it's an around-the-imagination adventure of the greatest stories from Europe, Malaysia, South Africa and more. Daily snack provided.*

ages 5-8

TUITION: \$175 per week
MATERIALS: \$33 per student (includes CD, book, poster and instrument)

Jungle Beat

MON-FRI: August 4-8, 9am-12pm

"Let's all get together for the jungle beat!" This camp is the perfect mix of music, creativity and fun. What could be more exciting than exploring the jungle and its many creatures through songs, drums, crafts and activities? Frogs, spiders, monkeys and snakes, oh my! Daily snack provided.*

ages 5-7

TUITION: \$175 per week
MATERIALS: (optional) \$32 per student (includes CD and drum)
LUNCH BUNCH: 12-1pm, \$10 per day (bring your lunch)

Intro to Keyboard

MON-FRI: June 9-13, 3:30-5:30pm
MON-FRI: August 4-8, 1-3pm

Your child will experience the joy of exploring the keyboard, patterning and improvising in a fun and creative way. A group setting allows for singing, dancing and playing in ensembles. Children will also learn drumming techniques and rhythms as we travel the world, celebrating music, folk dances and cultures.

ages 6-8

TUITION: \$125 per week
MATERIALS: \$24 per student (book & CD)

Flutefest!

featuring Guest Flutist
Dr. Cynthia Folio

Saturday, June 21
9am-3:30pm

ages 8 to adult

Dr. Cynthia Folio, guest flutist;
Dr. Lynne Cooksey; flute faculty

Are you a flutist? Join us in an all-day program dedicated to the flute. Renowned flutist and composer, Dr. Cynthia Folio, Associate Professor of Music at Temple University, is our special guest. Participants play in ensembles, attend a faculty recital and participate in enrichment activities and master classes.

REQUIREMENTS: Bring bagged lunch
TUITION: \$75 for workshop

Master Music Mix

NEW!

MON-FRI: July 7-11, 9am-4pm

Spend mornings writing music and learning to play guitar, piano and violin (no music reading experience necessary). DJ Amaze and Icon Djs lead afternoon topics on beat production, writing lyrics, audio recording, song producing and DJing using special software.

REQUIREMENTS: Bring headphones;
4GB USB flash drive
TUITION: \$325 per week

Guitar Exponential

Saturday, July 12, 10am-5pm

ages 10 to adult

Christopher Braddock, coordinator;
guitar faculty and special guests

A whirlwind musical tour featuring the most versatile of all instruments. Learn technique secrets of the pros, develop ensemble skills and increase your understanding of musicianship related directly to the guitar. Attend a faculty concert and perform in a group ensemble performance to round out the day.

REQUIREMENTS: Bring bagged lunch.
Bring own guitar;
electric guitarists need a portable amp/cord
\$75 for workshop
TUITION:

If your child has specific food or environmental allergies, or pertinent medical conditions, please list them on the Registration Form (pages 9-10).

String, Instrumental & Piano Programs (ages 3 to adult)

Jump Start Twinkles

MON-FRI: July 21-25;
Mon, Parent Talk: 6:30-8:30pm
(parents only); 10-11am Class;
11-11:30am Observations

Kate Inie-Richards

An introduction to the Suzuki method and philosophy for violin, viola and cello, Jump Start Twinkles allows you and your child to experience music-making in a fun, comfortable environment.

NEW!

Students who are considering the Suzuki Academy are encouraged to join us and "jump start" their Suzuki studies.

ages
3-7

REQUIREMENTS: Parents are required to attend all classes
TUITION: \$75 per week
MATERIALS: \$20 for box violin, dowel bow, contoured foam sponge and foot chart; cello materials TBA

Summer Suzuki Group Classes & Play-In

**Suzuki Academy violin students
in Books 1 & 2**

THURSDAYS: July 10, 17, 24, 31, 6-7pm

Julianne Murphy, Jessica Hoffman

Keep the momentum going! These group classes and play-in are designed to help Suzuki violin students keep review pieces fresh and continue to practice throughout the summer. Attendance at all sessions is not mandatory. The play-in on July 31 will be held in a local park, weather permitting.

REQUIREMENTS: Suzuki Academy violin students in Books 1 & 2 (must have completed Twinkles)

TUITION: \$60 per 4-week session



Youth String Camp

MON-FRI: July 21-25, 9am-4pm

Concert: Friday, July 25, 5pm

Experience the excitement of playing in a string ensemble, and enjoy other musical activities to strengthen reading skills and musicianship! We'll focus on different styles/genres to make reading and playing together interesting and fun. Sectionals, individual master classes, and musicianship classes are included, with physical activity to let loose and meet new friends!

REQUIREMENTS: Bring bagged lunch
TUITION: \$350 per week
REPERTOIRE: Minimum requirements:

Violin Suzuki Book 1 (Happy Farmer) or equivalent
Scales in G, D & A Major (2 octaves)

Viola Suzuki Book 2 or equivalent
Scales in D & G Major (1 octave) & C Major (2 octaves)

Cello Suzuki Book 2 or equivalent
Scales in D & G Major (1 octave) & C Major (2 octaves)

Bass Suzuki Book 1 (late) or equivalent
Scales in G, D & A Major (1 octave)

ages
6-12



Delaware Orchestral & Chamber Music Institute

**Intermediate/advanced students to 16
years; Counselors/fellows: Ages 17+**

MON-FRI: July 28-August 1, 9am-5pm

Concert: Friday, August 1

Maestro Simeone Tartaglione; Melinda Bowman, Eric Coyne, coordinators; faculty & special guests
A comprehensive camp focused on orchestral and chamber music for advanced/intermediate string, woodwind, brass and percussion students. Participate in orchestra rehearsals, sectional rehearsals, instrumental and conducting master classes, chamber music sessions, movement sessions and special presentations by professional guest artists and ensembles. Lunch provided daily. A placement audition is required for participation.

Counselor positions (100% tuition remission) will be awarded to high school seniors and college freshmen by audition. Fellowships (including a small stipend) will be awarded to college sophomores and older by audition. All other students are eligible to audition for select Leadership Scholarships (25% off tuition).

REQUIREMENTS: Audition by June 21, call to schedule.
Tuesday, June 10, 6-8pm
Saturday, June 14, 9am-12pm
Saturday, June 21, 9am-3pm
TUITION: \$425 per week (includes lunch)

Summer Piano Institute

featuring Guest Pianist Natalie Zhu

MON-FRI: July 14-18, 10am-4pm

Recital: Friday, July 18

Natalie Zhu, piano; Lotus Cheng, coordinator; faculty and special guests
A workshop for advancing pianists, participants will work with guest artists and Music School keyboard faculty in solo and group settings focusing on performance skills, musicianship and literature. Pianist Natalie Zhu, heralded by *The Philadelphia Inquirer* for her display of "emotional and pianistic pyrotechnics," is the guest pianist/clinician. Activities include private lessons, master classes, duo piano and duet rehearsals, coaching sessions and group classes. Participants may enter The Music School of Delaware Piano Competition (see below) at no additional cost. The week culminates in recital performances.

ages
10-18



REQUIREMENTS: Consent of instructor; bring bagged lunch
TUITION: \$365 per week

The Music School of Delaware Piano Competition

ages
10-18

Tuesday, July 15, 11am

This competition awards prizes for piano performance based on technical fluency, accuracy, musical interpretation and style. Each contestant performs one original composition for piano; arrangements and transcriptions are not eligible.

AGE CATEGORIES (as of July 15, 2014)

- I: ages 10-12, 5-minute max.
- II: ages 13-15, 7-minute max.
- III: ages 16-18, 10-minute max.

RULES:

- Deadline for application (with fee) is July 1, 2014. Use the enclosed registration form and complete the section on the back page.
- Students are eligible to compete in a given category if they have not previously received first prize in the same age category.
- All music must be memorized and an original copy provided for the judge(s); no photocopies allowed.
- Winners will be selected based on an audition before judges. Criteria include technical fluency, accuracy, musical interpretation and style.
- If only one contestant applies in a category or if there is not a qualified contestant, the judge(s) may decide not to select a winner.
- The judge(s)' decision is final.
- First-prize winners will be required to perform in a master class at the end of the competition.

AWARDS:

- Cash prizes and certificates will be awarded to the winners in each category. The number of prizes awarded is at the discretion of the judge(s).
- Winners will be announced and awards presented in a master class at the conclusion of the competition.

APPLICATION FEE:

- \$40 (waived for Summer Piano Institute participants); no Summer Processing Fee

Musicianship

(ages 7 to adult)



Individual Musicianship Lessons

See calendar on page 2 for dates

Want your child to learn more about the structure of music, but a class environment won't work? Take advantage of the Music School's Individual Musicianship Lessons package. A minimum of two hours of lessons is required. Additional lessons may be scheduled (\$22.50 per half hour). Lesson length varies (30/45/60 minutes).

REQUIREMENTS: Phone interview with department head

TUITION: \$90 for two hours (four half-hours) of individual musicianship lessons

Composition

(ages 9 to 18)

Introduction to Creative Music, Improvisation & Composition

MON-FRI: June 23-27, 9-10am

Concert: Friday, June 27

Chuck Holdeman

Explore improvisation and take first steps in composing, both in a group setting and individually. Music-reading ability and experience as an instrumentalist or singer are useful but not required. No previous composition experience is necessary. Compositions will be notated on paper and in music software. Parents and friends are invited to a mini-performance on Friday including student improvisation and new tunes.

REQUIREMENTS: Phone interview with instructor; older or younger students are considered on an individual basis

TUITION: \$110 per week

ages 9-12

Delaware Young Composers Workshop

MON-FRI: June 23-27, 10am-12pm

Concert: Friday, June 27

Chuck Holdeman

Compose, perform and record your own music! An experienced composer will guide you through the process, providing instruction in improvisation, musicianship, music software and other aspects of composing. Compose a short piece that will be performed and recorded by the group. Open to students with any level of composition experience, including beginners (music-reading is required, and some competency as an instrumentalist or singer). Any style of music is acceptable.

REQUIREMENTS: Phone interview with instructor; older or younger students are considered on an individual basis

TUITION: \$220 per week

ages 13-18

Programs for Adults

(ages 18 and up)



Adult Sampler

MON-FRI: July 7-11, 9am-12pm

Have you always wanted to learn an instrument? Here's your opportunity to dive in! Build skills on the piano and the guitar. Explore composition (you don't have to read a note!) and join our noted guest in a topic that is sure to enthuse.

REQUIREMENTS: Phone interview

TUITION: \$200 per week

NEW!

Chamber Music for Adults

MON-FRI: July 7-11, 10:30am-12pm

Lifelong Learners: Are you interested in playing chamber music with musicians like yourself? Maybe you've always wanted to play in a string quartet, a brass trio or in a duo? If so, this program is for you. Faculty and guest artists will work with ensembles and help each choose exciting music to play. Private lessons are available at an additional cost. Ensembles will vary with participation, so encourage your musical friends to join the fun! For early intermediate to advanced students.

REQUIREMENTS: Interview with dean

TUITION: \$175 per week

Adult Cello Festival

WED-SAT: June 25-28;

Wed/Thurs, 6:30-8:30pm; Fri, 6-9pm;

Sat, 10:30am-2:30pm

"When I started learning the cello, I fell in love with the instrument because it seemed like a voice—my voice." *Mstislav Rostropovich*. Find your voice during our 4-day festival for cello enthusiasts at all levels. Adults will participate in small ensembles and cello orchestra, and will enjoy a recital by faculty cellist, Jennifer Stomberg and faculty pianist Lotus Cheng. A reception on Friday night and lunch on Saturday will provide cellists an opportunity to socialize.

REQUIREMENTS: Phone interview with instructor

TUITION: \$175 per week

ADULTS, SEE ALSO:

- Private Study 3
- Flutefest 4
- Guitar Exponential 4
- Individual Musicianship Lessons 6

SOUTHERN DELAWARE

KENT AND SUSSEX COUNTY • MILFORD BRANCH 10 South Walnut Street, Milford DE 19963 • (302) 422-2043



Private Study (all ages & levels)

Instrument, Voice & Suzuki Academy Private Lessons

See calendar on page 2 for dates

Private instruction is offered in voice, strings, woodwinds, brass, percussion, piano, guitar, bass guitar, mandolin and dobro. A minimum of two hours of lessons is required. Additional lessons may be scheduled (\$24.75 per half hour). Lesson length varies (30/45/60 minutes). Regular Suzuki Academy group classes resume in Fall 2014.

TUITION: \$99 for two hours (four half-hours) of private study

Instrument Introduction for Current Students

See calendar on page 2 for dates

Would you like to try a new instrument? Want to add variety to your musical routine? Summer is a great time to explore a new instrument without a long-term commitment. Register by May 1 and receive \$10 off private lessons for any new instrument. Regular registration policies and summer private study schedules apply.

TUITION: \$10 discount on private study rates (first two hours only)
MATERIALS: Contact the Registrar about instrument rentals

Early Childhood Music & Movement

Creatures In My Backyard

SATURDAYS:

May 31, June 7, 14
10-10:45am

Welcome to my backyard! Dedicated to the great outdoors, the environment and our many neighborhood animal friends, this class is full of songs, instruments, finger-plays, rhymes, musical stories and dances that will inspire children and parents to explore and discover the wonders of the natural world.

TUITION: \$45 per 3-week session

ages
18m-4
with adult

Workshops, Classes & Camps (Ages 6 to 17)

Ready, Set, Play! Group piano sampler for kids

WEDNESDAYS: July 9, 16, 23, 30
4:30-5:30pm

Layne Thompson-Payne

Not sure if your child is ready to take piano lessons? This class is a fun exploration of the piano through guided instruction in playing, music reading, composing and technique. Students must be able to focus attention on teacher's directions, maintain self-control and participate positively in class. Attendance at all classes is expected.

TUITION: \$60 per week
MATERIALS: \$10 (includes book)

ages
6-8

Sight & Sound Camp

MON-THURS: August 4-7
9am-12pm

Locations: The Music School of Delaware and Mispillion Art League in Milford

Tune up your senses! Experience the joy of music and art through this exciting multi-disciplinary camp. Neighbors on South Walnut Street, the Music School and Mispillion Art League collaborate on this camp providing daily group lessons in musical offerings such as piano and voice, and in painting and drawing. Join us for four days filled with artistic "Sight and Sound!"

TUITION: \$160 per 4-day session

ages
8-14



Workshops, Classes & Camps

(Ages 6 to 17, cont.)

For Adults

(ages 18 and up)

Take The Stage!

with Michele Xiques
of First State Dance Academy

TUESDAYS: July 8, 15, 22, 29
10am–12pm

Location: First State Dance Academy, Milford
Learn to move with the music! Michele Xiques, Director at the First State Dance Academy, and the Music School's Layne Thompson-Payne guide students through select song and dance favorites from popular Broadway productions. Designed to build a young performer's stage presence and boost confidence in performance, this program is open to all levels. No prior dance or singing experience necessary. Parents, friends and fans are invited to a special presentation following the session on July 29.

ages
10-14

TUITION: \$100 per 4-week session

High School Garage Band

WEDNESDAYS: June 4, 11, 18, 25
6–8pm

Nathan Ames

Time to rock 'n' roll! This class introduces students to composing rock music and performing with others in a rehearsal setting. Enrollment is limited to a maximum of three guitars, one bass, one drum set and vocals; additional sections will be added as needed.

ages
13-17

REQUIREMENTS: Younger students may be considered on an individual basis
TUITION: \$75 per 4-week session
MATERIALS: TBA (purchased by student)

Saturday Café

SATURDAYS: May 31, June 7, 14
10–11am

Join our faculty and community members in an informal gathering for lively conversation about music and the arts. Coffee and refreshments will be available for a small fee and provided by Dolce Bakery. Locations will vary, so be sure to check the calendar for more information.

COST: \$5 per session, RSVP required

Never Too Old to Learn Something New! Musical Sampler for Older Adults

TUESDAYS: July 8, 15, 22, 29
6–7:30pm

Larry Walker and Layne Thompson-Payne

Location: Rehoboth Art League, Rehoboth Beach
Have you ever said, "I always wanted to take..."? Here's your chance to learn about select instruments without a full-year commitment. This class offers hands-on experience with flute and voice, while teaching basic skills in reading music and effective practice techniques.

TUITION: \$120 per 4-week session
MATERIALS: \$27 for instrument rental (unless you own your own)

Woodwind Ensemble

THURSDAYS: July 10, 17, 24, 31
6–7pm

Larry Walker

Do you want to "blow off" some steam? Join your peers in a small woodwind ensemble! This ensemble will strengthen already acquired skills and provide a performance opportunity for amateur musicians.

TUITION: \$55 per 4-week session
MATERIALS: TBA (purchased by student)

Rock 'n' Roll Jam Session

FRIDAYS: May 30, June 13, 20, 27
6:30–8pm

Nathan Ames

Live out your wildest fantasies of being a long-haired rock 'n' roller! Each Friday night, we offer a chance for adults to jam in a rock band setup, playing everything from old-time favorites to the latest Top 40.

TUITION: \$16 per session
RSVP required





SUMMER 2014

Registration Form

Office Use Only

Account # _____

Method of Payment: Visa/MasterCard/Disc./Amer. Express
 Check # _____

Date Received _____ Amount _____

Order _____ Clerk _____

Please return form and payment, including \$20 Summer Processing Fee, Tuition and Materials Fees, to the branch at which your lessons/camps/classes/workshops will be held.

- Milford Branch**
P.O. Box 442 or 10 South Walnut St., Milford, DE 19963 • (302) 422-2043 | (302) 422-3340 (fax)
- Wilmington Branch**
4101 Washington St., Wilmington DE 19802 • (302) 762-1132 | (302) 762-3422 (fax)

STUDENT

Name _____

Street Address _____

City _____

State _____ ZIP _____

Home Phone _____ Cell Phone _____

Birth Date _____ Grade in Sept. _____

School _____

Known Allergies _____

PERSON RESPONSIBLE FOR PAYMENT

Name _____

Street Address _____

City _____

State _____ ZIP _____

Phone _____

Email _____

PARENT/GUARDIAN

Mother/Guardian Name _____ Email _____

Employer _____ Work Phone _____

(Please check your preferred contact method) Cell Phone _____

Father/Guardian Name _____ Email _____

Employer _____ Work Phone _____

(Please check your preferred contact method) Cell Phone _____

CAMP/CLASS/WORKSHOP

INSTRUMENT

DATES

TIME

TUITION/FEES

1. _____

2. _____

PRIVATE LESSONS*

Instrument _____ Instructor _____

Days available: Mon. Tues. Wed. Thurs. Fri. Instrument Introduction Program?

Times available _____

Lesson length: 30 minutes 45 minutes 60 minutes

Weeks available: 1 2 3 4 5 6 7 8 (Refer to calendar on page 2 and mark which weeks you are available)

*CURRENT STUDENTS: before registering, please check with your instructor to confirm that he/she will be teaching in the summer.

ADDITIONAL INFORMATION—To help us better serve our community, please answer the following questions. This information is voluntary.

Does this student have any special needs or disabilities? No Yes (please specify): _____

What is the student's race/ethnic background?

- African-American
- Asian/Pacific Islander
- Caucasian
- Hispanic/Latino
- Native American
- Other (please specify): _____

How did you learn about the Music School?

- Already enrolled
- Friend/Family
- Advertisement
- Print article/Feature
- Radio/Television
- Music School publication
- Music School website
- Other (please specify): _____

By signing this form, I agree to the conditions and policies as stated on page 11.

Signature _____ Date _____

PHOTO RELEASE

I hereby give The Music School of Delaware and their legal representatives and assigns the right and permission to publish, without charge, any photographs/images of [student name] _____ taken at The Music School of Delaware or at off-site Music School functions. I release all claims with respect to copyright ownership and publications including any claim for compensation related to use of the materials. Photos/images may be used in print, electronic or video format, including but not limited to newsletters, brochures, flyers, press releases, advertising, the annual info guide, the school's website and other promotional materials.

I give permission for the Music School to use the above-named student's photo/image.

I DO NOT give permission for the Music School to use the above-named student's photo/image.

Signature (of parent if under 18) _____ Date _____

Email _____ Phone _____

FAMILY & FRIENDS

The Music School hosts many special music events that may be of interest to grandparents or other family and friends. Please complete this form so that we can notify them of upcoming events. Thank you for your assistance!

Name of Grandparent #1 _____

Street Address _____

City _____ State _____ ZIP _____

Phone _____ Email _____

Name of Grandparent #2 _____

Street Address _____

City _____ State _____ ZIP _____

Phone _____ Email _____

Name of Other Family/Friend _____

Street Address _____

City _____ State _____ ZIP _____

Phone _____ Email _____

THE MUSIC SCHOOL OF DELAWARE PIANO COMPETITION

Piano Competition contestants should complete the Student, Parent/Guardian and Person Responsible for Payment sections on the front of this form and fill out the remainder of the details below. Please submit the \$40 application fee with this form (waived for Summer Piano Institute participants). No Summer Processing Fee is necessary for contestants registering for the competition alone.

Contestant Name _____ Contestant Phone _____

Birth Date _____ Contestant Email _____

Private Teacher Name _____ Teacher Phone _____

Years Studied _____ Teacher Email _____

AUDITION REPERTOIRE

COMPOSER

LENGTH

By signing this form, I agree that I have read and understand the information and rules of the Piano Competition as outlined on page 5. I understand that contestants selected as winners are required to perform in the master class at the end of the competition on Tuesday, July 15, 2014.

Contestant signature _____ Date _____

Teacher signature _____ Date _____

SUMMER POLICIES & INFORMATION

HOW TO REGISTER

- ➔ Registration deadline is **Monday, June 9, 2014**.
- ➔ Return completed Registration Form (pages 9–10, both sides) with full payment to the appropriate branch address.
- ➔ A \$20 nonrefundable **Summer Processing Fee** applies to summer registrations in addition to tuition and materials fees. **Fee is waived if participant registers and pays in full by May 1** for all lessons, camps, classes and/or workshops.
- ➔ **Full payment = Summer Processing Fee (after May 1) + Tuition + Materials Fee**
- ➔ **Multi-camp discount:** Enroll in more than one camp/class/workshop and get 20% off the lesser-priced camps/classes/workshops. (Does not apply to private lessons. Discount is per student, not per family. Does not apply to tuition already discounted by financial aid.)

ENROLLMENT

Enrollment in all programs may be limited. Registration is on a first-come, first-served basis and must be secured by paying tuition and fees in full. The Music School reserves the right to cancel camps/classes/workshops due to insufficient enrollment, in which all payments are refunded in full.

TEACHER ABSENCE

Lessons missed due to teacher absence will be made up but are to be scheduled directly with the teacher. The Music School reserves the right to provide a refund in lieu of a make-up lesson at its sole discretion.

STUDENT ABSENCE

There are no make-ups or refunds for missed lessons or classes due to student absence or for early withdrawal.

REFUND & CANCELLATION POLICY

- ➔ **Before June 1, 2014:** Full tuition and materials fees will be refunded.
- ➔ **After June 1, 2014:** No refund of any amount will be made. Please contact the appropriate branch to cancel/withdraw.
- ➔ If the Music School cancels a camp/class/workshop, full tuition, materials fees and \$20 Summer Processing Fee (if applicable) will be refunded.

SPECIAL NEEDS/DISABILITIES

The Music School of Delaware serves many people with special needs and developmental or physical disabilities. When registering, those with special needs or circumstances are asked to volunteer pertinent information so that the best placement can be made for the student. The Music School facilities are ADA compliant. The Wilmington Branch has an elevator that permits easy access to the second floor.

FINANCIAL ASSISTANCE

The Music School of Delaware administers a financial assistance program intended for families who have restricted financial circumstances. Financial Aid Application Forms are available at the front desk of either branch. Completed Financial Aid Application Forms must be submitted at the time of registration. Families requesting aid must submit the \$20 Summer Processing Fee (if applicable), tuition and materials fees, as well as a Financial Aid Application Form with supporting documentation for any year in which aid is being requested, even if they have received aid in the past. However, families who are awarded financial aid for the summer do not need to reapply for the fall. If a family is not eligible for financial aid, all fees and tuition are refundable if requested.

WILMINGTON BRANCH

4101 Washington Street
Wilmington, DE 19802
(302) 762-1132
(302) 762-3422 (fax)

MILFORD BRANCH

10 South Walnut Street
Milford, DE 19963
(302) 422-2043
(302) 422-3340 (fax)
Mail to: P.O. Box 442



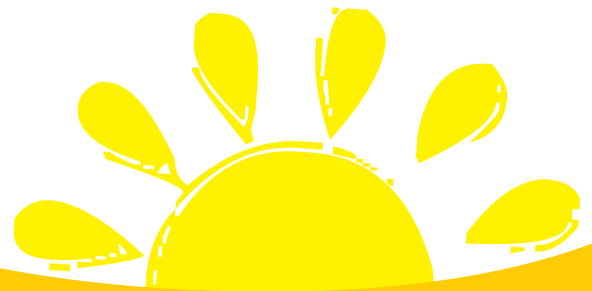
www.musicschoolofdelaware.org



Wilmington Branch
 4101 Washington Street
 Wilmington, DE 19802

Milford Branch
 10 South Walnut Street
 Milford, DE 19963

NON-PROFIT ORG.
 U.S. POSTAGE
 PAID
 PERMIT #11
 WILMINGTON, DE



Music Excellence for Everyone at The Music School of Delaware!

Programs are made possible, in part, by a grant from the Delaware Division of the Arts, a state agency dedicated to nurturing and supporting the arts in Delaware, in partnership with the National Endowment for the Arts.

